

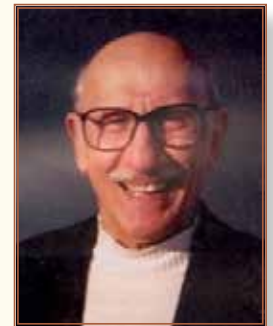


Global Transformations

Newsletter of the Department of Sociology at Michigan State University

UNDERGRADUATE PROFESSIONAL DEVELOPMENT ENDOWED FUND

The Department of Sociology continues to place great importance on the endowment of an Undergraduate Professional Development Fund that will provide scholarships for undergraduate students and support expanded student experiential learning opportunities. This past year, the department was very pleased to receive a \$5,000 donation from former MSU faculty member **Dr. William Form**. Dr. Form taught at MSU for 25 years, and subsequently held positions at the University of Illinois and at The Ohio State University. He was a student of C. Wright Mills, a former President of the American Sociological Association, and helped found the field of Industrial Sociology. We are most grateful for Dr. Form's support. We also hope that others will consider joining him in support of MSU Sociology undergraduate students.



Dr. William Form

HIGHLIGHTS

- Undergrad Endowed Fund
- Grad Collective Message
- Retirements
- Alumni News
- In Memory
- New Faces
- Faculty Kudos
- Promotions

The Department of Sociology is committed to sharing your stories as well as improving communication with alumni. To help us, we would be grateful if you would send us an e-mail at soc@msu.edu with your current contact information and stories of your personal and professional milestones, recent accomplishments and recognition.

MESSAGE FROM THE GRAD COLLECTIVE

Some of us have always known what we “wanted to be when we grew up,” but some of us haven’t. In grad school we all feel the implicit push towards academic jobs post-graduation. However, some of us are considering (or have always wanted) non-academic jobs. A challenge for some of us is knowing what a non-academic job “looks like.” The MSU Graduate School puts on a couple of workshops a year that discuss this, and those have been very helpful and encouraging, but one of the things they talk about is utilizing alumni networks. However, our alumni networks are generally limited to those who have finished while we have been in grad school, former students of our professors, and those that we meet at academic conferences. This tends to leave out alums who are working in non-academic settings, but we know you are out there, and we would like to hear from you! What are you doing now? How have you taken what you learned in grad school to other settings? To help facilitate this we invite all department graduate alumni to connect with us on LinkedIn and we have set up an alumni group called MSU Sociology Graduate Alumni to facilitate interaction and connections among all alumni. You can also contact us directly if you prefer at rhdenny@msu.edu and mindessa@msu.edu.

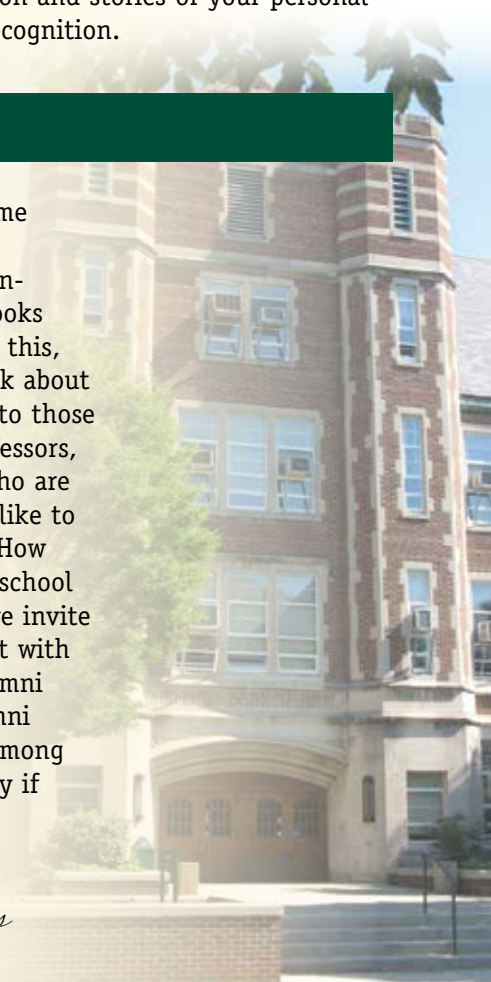


Riva Denny



Sam Mindes

Riva Denny and Sam Mindes



Message from the Chair



Raymond Jussaume

Once again, we are pleased to share with you some of the latest happenings in the Department of Sociology and news about some of those who have been part of our Department's history. We hope more of you will share with us your stories of success so that we may share them via this newsletter. Please send me your news at jussaume@msu.edu, and we will get your announcements into the next edition of our newsletter. We also encourage you to visit our website at

sociology.msu.edu to learn more about what is happening in MSU Sociology.

One of the Department's more exciting initiatives is the expansion of experiential learning opportunities for our undergraduate students, as well as more information on professional opportunities both within and outside of academia for our graduate students. We are especially grateful for Dr. William Form's recent contribution of \$5,000 towards our undergraduate endowment. We still have a long ways to go, but all contributions will help us do more for our students!

Please read the contributions in this newsletter from our undergraduate and graduate students and do take the time to communicate with them directly. Our students often ask how they can communicate with our alums because students value your input on how to prepare themselves for their lives after MSU. In this era when our students face many challenges, it would be beneficial for them to hear about your experiences and knowledge.

Raymond Jussaume
Professor and Chair

RETIREMENTS

Dr. Khalida Zaki served the Department of Sociology for more than twenty years as an Instructor of Sociology and Undergraduate Program Director. Dr. Zaki's teaching and research included Integrative Studies in Social Sciences focusing on International Development and Change; Social, Cultural and Demographic Perspectives on South Asia; the global context of Islam & gender;



Dr. Khalida Zaki

Women's status and family planning in Pakistan; Pakistani-Americans; Muslim Immigrants health; and Youth and Schools. She was honored with the MSU All-University Faculty - Excellence in Diversity Award in 2003.

During his time in the Department of Sociology, Professor **Vladimir Shlapentokh** published more than 30 books and dozens of professional articles about Soviet and contemporary Russian issues. His research interests include: the segmented approach in the analysis of society; the role of the feudal model for understanding contemporary societies; the nature of totalitarian society; the interaction between ideology and public opinion; and the role that fear plays in the advancement of order in society.



Dr. Vladimir Shlapentokh

DEPARTMENT OF SOCIOLOGY
Michigan State University

509 E. Circle Drive, Room 316 Berkey Hall
East Lansing, MI 48824-1111
College of Social Science
517-355-6640 soc@msu.edu

UNDERGRADUATE ALUMNI SPOTLIGHT

Hello! My name is **Hollis Henry**. I graduated from Michigan State with a BS in Sociology in 2014. As an undergraduate, I was fortunate to be involved in the department on several committees, work on a research project with a professor, and serve two years as the President of the Undergraduate Sociology Association. After graduation I worked for a year and half in the Office of Survey Research. In April, I moved to St. Paul, MN, to work as a research assistant for Wilder Research. In my new position I'm responsible for assisting research scientists with data collection, including key-informant interviewing, qualitative data coding, survey questionnaire design, and web survey programming.



Hollis Henry

MSU has so many great teachers and resources. I encourage students to build relationships with professors; one never knows what doors they can open. Volunteering and serving the local community directly helps student get firsthand experience they can't find in a classroom. The last thing I would recommend to current students is to take more math!

PH.D. ALUMNI SPOTLIGHT

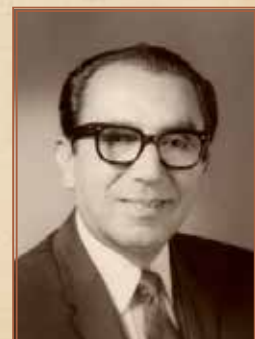


Dr. Carmen Bain

Carmen Bain, PhD, graduated in 2007 from MSU and is currently Associate Professor in Sociology at Iowa State University. Dr. Bain's research interests include the political economy of food and agricultural systems, gender, agriculture and international development. Dr. Bain loved her time at MSU and encourages graduate students to get involved in faculty research projects to gain practical experience. "I was fortunate to have a really great mentor at MSU, Dr. Larry Busch, who expected his graduate students to collaborate on his research grants, co-author publications, and present at professional meetings. This experience was invaluable in helping me prepare for a career as a sociology professor." Dr. Bain also encourages graduate students to build relationships among each other. "I developed a great network of friends among my fellow graduate students and it's wonderful to continue to work together and collaborate."

In Memory

Dr. Julius Rivera, who earned his Ph.D. in Sociology from Michigan State University, passed away on February 19th, 2014. He taught at Texas Tech University, the University of Arizona, and the University of Houston. He was Professor Emeritus at the University of Texas at El Paso. He is well known for his book "Latin America: A Sociocultural Interpretation," and was actively involved with UTEP's Center for Lifelong Learning (juliusrivera.com).



Message from the

USA PRESIDENT



Katrina Groeller

This past October, the Undergraduate Sociological Association attended the annual Michigan Sociological Association conference that was held at Muskegon Community College. Next, a group of us attended the TEDxMSU event in March. The event was inspiring, as it focused on the “idea of willpower and the mental

and physical processes by which brilliant ideas make it out of brain-space and mere musings...and into the real world.” On April 18th, we participated in the Spartan Day of Service. We helped clean up the Lilac Garden in East Lansing.

With several of our USA members graduating, there is the unease at what to expect in the job market this year. Communication between the Sociology Department’s undergraduates and recent alumni is imperative in helping students feel comfortable with entering this job market. If you would like to help by communicating with current undergraduate Sociology majors at MSU, possibly through a Skype conference or an in-person talk, please send an email to me at groeller@msu.edu, or contact our Department Chair, Ray Jussaume, at jussaume@msu.edu.

Katrina Groeller

NEW FACES

Roseann Bills is the Department’s new Graduate Secretary. Roseann has worked on campus for nearly 10 years with most of that time spent as a graduate secretary. Previous to MSU, Roseann owned a plastics recycling business that recycles #2 HDPE plastic from around Michigan and surrounding states. Roseann especially enjoys working with the graduate students to help them reach their goals.



Roseann Bills



Dr. Jennifer Carrera

The Department of Sociology is happy to welcome Assistant Professor **Jennifer Carrera** to the faculty. Dr. Carrera recently completed her Ph.D. in Sociology at the University of Illinois where she also completed an M.S. in Environmental Engineering. Dr. Carrera has a previous M.S. in Biostatistics from Emory University. Her doctoral dissertation focused on water and sanitation struggles in Detroit, MI and Lowndes County, AL. Dr. Carrera’s future work will explore the health impacts of impaired water and sanitation access among low income populations in economically developed settings.

YOU CAN DONATE TO OUR DEPARTMENT ONLINE.

www.socialscience.msu.edu/alumni/giving.html

- ➔ Scroll down and click on make an online gift
- ➔ Under search for a fund type in Sociology
- ➔ Box will drop down with list of funds
- ➔ Click on fund of your choice
- ➔ Complete donation

THANKS FOR YOUR SUPPORT!

FACULTY KUDOS



Dr. Brendan Mullan

Dr. Brendan Mullan will be serving as President of the North Central Sociological Association during the 2015-16 academic year.



Dr. Carl Taylor

Dr. Carl Taylor was honored with the MSU College of Social Science Alumni Association Outstanding Teaching Award presented at the College's 2015 Spring Undergraduate Commencement Ceremony on May 9, 2015.

Promotions

Our Sociology Department is most pleased to announce the promotions to Associate Professor with tenure of three faculty.



Dr. Stephanie Nawyn

Associate Professor **Stephanie Nawyn's** expertise is in gender and migration, focusing on forced migration and the ways that structural inequalities inhibit immigrant incorporation. Her work has focused on refugee resettlement and the economic advancement of African migrants in the U.S. Dr. Nawyn also has begun a study of human trafficking in Turkey, and was a Fulbright Fellow at Istanbul University during the 2013-14 academic year. Dr. Nawyn has consulted to refugee resettlement organizations in the United States and Turkey, and has contributed to the U.S. Department of State's Trafficking in Persons Report.



Dr. Hui (Cathy) Liu

Associate Professor **Hui (Cathy) Liu's** research interests include population health and mortality, family and marriage, bio-demography of aging and the life course, LGBT population, sexuality, and quantitative methodology. Dr. Liu is a current recipient of an NIH Career Award (Mentored Research Scientist Development Award). She was the 2013 winner of the Outstanding Professional Paper Award from the National Council on Family Relations. Dr. Liu's research has been widely reported in prominent news outlets including the New York Times, the Washington Post, ABC News, and CBS News.



Dr. Stephen Gasteyer

Associate Professor **Stephen Gasteyer's** research examines the nexus of community development processes, food, water, and public health. He is examining how development processes are implemented in the Middle East (Palestine-Israel), and the United States (specifically in the Great Plains and Michigan). His work addresses environmental equity and justice and the processes that have systematically disenfranchised indigenous peoples. Next year, Dr. Gasteyer will be on a Fulbright Fellowship in the Palestinian territories, where he will be looking at adaptive management and the land-water-food-energy-climate nexus.